



Certification : ISO 9001:2015

Vapore™
bathing to stay healthy

CATALOGUE
2018



OUTDOOR SPA | MASSAGE TUB
WHIRLPOOL SYSTEM | STEAM+SHOWER PANEL
SHOWER PANEL | STEAM+SHOWER CABIN
STEAM+SHOWER+JACUZZI CABIN

Design a **WELLNESS** space in your **Dream Home**

What We Are VAPORE



Be one of the world's leading brands in WELLNESS, we are dedicated to supplying product of the highest quality at a reasonable price for absolute consumer satisfaction.

VAPORE help you simplify your living style so that you can free up your quality time & enjoy with your family to stay healthy. We do this by providing a comprehensive & fully integrated sales & Services for all kind of SPA, PLAIN TUB, JACUZZI MASSAGE TUB, STEAM GENERATOR, STEAM-SHOER CABIN, STEAM-SHOWER PANEL, SHOWER PANEL & RAIN SHOWERS etc.

We push the boundaries of smart bathroom & home to an inspirational design possible for every person on this planet through cutting edge design & innovation in interior as well as exterior like GLASS HARDWARE, GLASS RAILING HARDWARE. We provide services like all type of TOUGHENED GLASS WORK, SHOWER ENCLOSURE installation, ALUMINUM STRUCTURE GLAZING work, SPIDER GLASS WORK & Glass office partitions.

India's **1st**
SERVICE CENTER

8 Dimensions of wellness



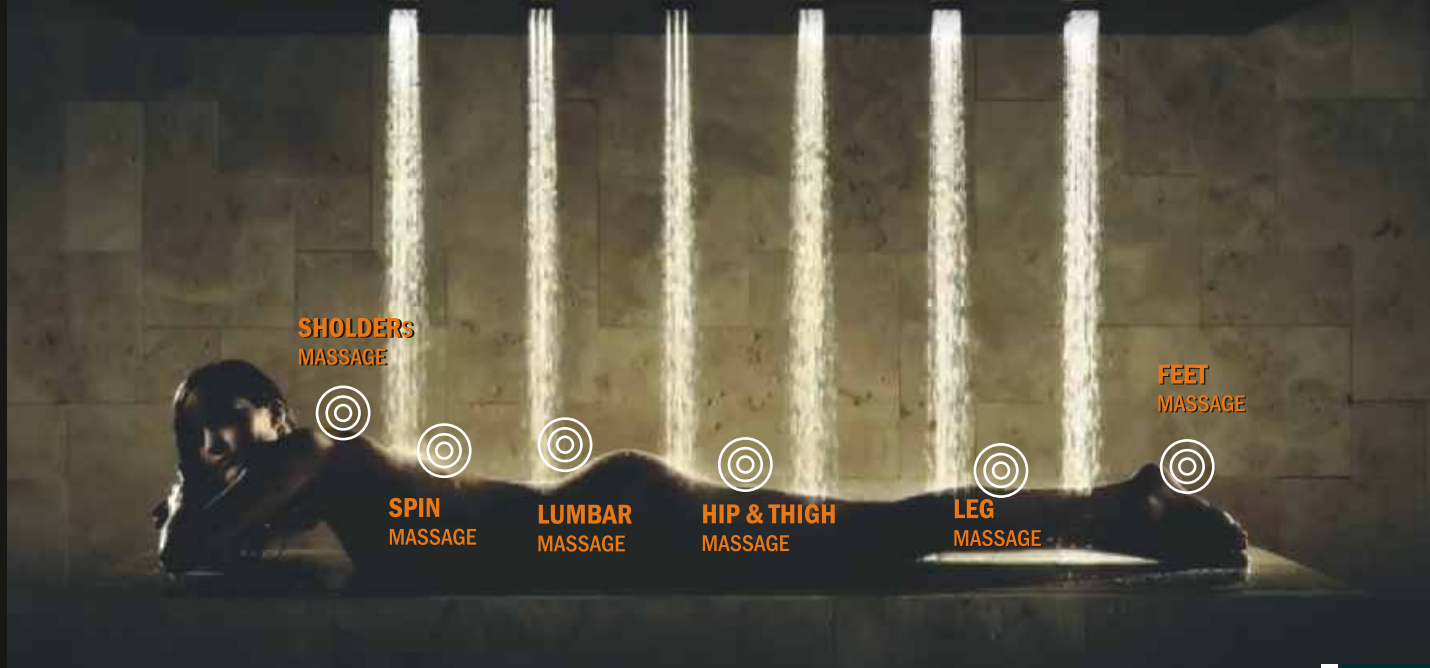
JACUZZI OR MASSAGE TUB : In the 1940s, Candido Jacuzzi developed a submersible pump to provide hydro therapy treatments for his son, who had rheumatoid arthritis. The humble 'Jacuzzi' named after its founder, eventually developed into the tubs which so many people enjoy the use of today. Bath tubs provide relaxation and soothe

aching muscles. Candido Jacuzzi could never have imagined how jacuzzi tubs would take the world by storm, and some health benefits of using a Jacuzzi tub :

- BENEFITS :** 1. Muscle pain relief
2. Better blood circulation
3. General well-being 4. Stress relief.



VAPORE USES POWERFUL TARGETED MASSAGE JETS FOR ULTIMATE RELAXATION & FEELING REFRESHED





See Our **GUARANTEE**

5 YRS SERVICE GUARANTEE – absolute peace of mind



Creating your private home Spa Center can be a big investment of both your time and money, that is why we want you to feel at ease when choosing VAPORE as your wellness advisor. We provide an unmatched 5Yrs. service guarantee wherein all spare parts will be carrying an onsite part replacement warranty up to 2 Yrs. from date of purchase. This guarantee covers all electrical parts, operational components and functional features such as the handheld shower.*

To make things even easier, we stock all spares for our wellness range here at DERABASI ensure a fast response time.

*This guarantee does not cover accidental damage or normal wear & tear – Your statutory rights are not affected.

HOME VIEW GUARANTEE - Risk free shopping



VAPORE is predominantly a digital retailer, with all sales done directly through our website or mail order catalogue. We understand that buying from the internet does not allow you touch and feel a product to give you an idea of the quality & finish you can expect. Here at VAPORE, we are certain of the superior finish and excellence offered throughout our catalogue. This is why we include our Home view Guarantee as standard with all product purchases*.

Eliminate any risks and doubts that you may have before you buy, knowing that you're protected by our exclusive Home view Guarantee. We will deliver your purchased goods to your home at a time and date that suits you. If you're unhappy with the quality or finish for any reason, simply let us know within week (Monday to Saturday) and we'll collect the goods from you. Only you have to pay INSTALLATION & DISMANTLING charges. It's that simple!

*Applicable on all orders over 4 lac dispatched to the Chandigarh/Panchkula/Mohali only. Please retain all the original packaging so that the item can be returned safely to OEM.

CUSTOMER SERVICE GUARANTEE –Your Satisfaction is our Motto



Here at VAPORE, we take pride in providing the best in industry Customer Service. Our well trained technical expert are equipped to help you with any technical enquires you may have regarding any of the products within our range.

Unsure whether a particular shower enclosure will work in your bathroom or if your water system is performance compatible? Get in touch today – We're here to help! We can offer our experience and product knowledge to help put your mind at ease. If a member of our team can't answer your enquiry, we will Endeavor to ensure an answer gets back you as quickly as possible.

PRICE PROMISE GUARANTEE - Unbeatable value



VAPORE is committed to provide wide range of its wellness products across the states of Upper North as Chandigarh, Haryana, Punjab, Himachal, J & K at an unbeatable price.

However, we understand that we're not the only bathroom retailer available and that competition is a natural occurrence in any marketplace. That's why we offer our Price Promise Guarantee as a way to tell you that our prices will not be beaten when choosing a like-for-like item.

If you find a product that's similar to one offered by VAPORE, complete with the quality and aftercare support expected by VAPORE, please contact a member of our sales team in your location on 08289007566. We will do our best to help make your purchase choice a little easier.

BUYING WITH CONFIDENCE & FREE DELIVERY - The VAPORE Difference



Buying anything on the internet can be a daunting task for many, which is why we try to make the shopping experience at VAPORE as seamless and safe as possible. We guarantee that any information submitted to VAPORE will be kept within the strictest privacy - We don't share any of your information with any third party companies.

VAPORE can deliver any in-stock items in just 72 hours once payment has been completed. Please let us know if a quick delivery is required. Free Delivery only in Chandigarh/Panchkula/Mohali.

There's a few different ways you can get in touch with us, starting with speaking with our team over the phone – Call 07307807566 between 10.00am – 6.00pm Monday to Saturday. If you'd prefer to email us info.wellness@vapore.co.in or [what's app on 7307207566](#).

Terms & conditions apply*



Why you Choose VAPORE

VAPORE understands the importance of making the correct buying decision. With many different suppliers across the country, it is important to be confident that your chosen supplier will provide excellence in both product and after service support. Please read the following "top 10" reasons people choose to buy from VAPORE

QUALITY : VAPORE understands the importance of using high quality materials combined with unrivalled workmanship in order to create a product that will stand the test of time. We pay special attention to the build properties of our units to ensure that the risk of breakdown is greatly reduced so that you can continue to enjoy your new unit for many years.

Key points include:

(1) 3.8 mm acrylic material reinforced with 3-4 layers of fiber glass for maximum strength (2) 6 – 8mm tempered safety glass used with all units as standard. (3) 1.6 – 1.8mm aluminum profile framing for added sturdiness and rigidity.

RELIABILITY : All of our products are built with reliability as a primary concern and we expect our products to continue to serve you well into the future. All of our units are tested extensively for 30 minutes prior to the final packaging stage to ensure that your new product is ready to install straight out of the box.

Key points include:

(1) High quality anti-corrosion chrome plating on all fixtures over time (2) Door rollers that are tested to pass over 100,000 consecutive uses (3) Ceramic core within each thermostatic valve to maximize life span.

SAFETY : Optimum safety for the user during operation of all of our products is paramount. Our steam shower enclosures feature an RCD (Residual Current Device) as standard. The RCD immediately stop electrical flow to the unit, if the RCD detects a short circuit, lack of water supply or overheating.

Key points include:

(1) Edge protection with all glass panels to greatly reduce the risk of glass breakage (2) Overheating protection with all steam generators to prevent burnout (3) Tempered safety glass used as standard with all units

CUSTOMER SERVICE : VAPORE is proud to offer an unrivaled, knowledgeable team of staff that are dedicated to helping you choose the right product to suit your project. Our prompt after service and technical team is also available to help answer any questions you may have during or after installation.

Key points include:

(1) We love to hear from you – Phone us, email us or what's app

(2) Friendly members of staff who know VAPORE products inside and out (3) Over 60% of our products are in immediate stock.

VALUE FOR MONEY : VAPORE sells direct or through our Registered & Reputed Dealer to the consumer. As there is no middle-man involved we are able to pass the savings we make on to you. The result is an outstanding product being sold at a highly competitive price. We also believe in transparent pricing so there are no hidden fees or additional extras you need to pay for.

Key points include:

(1) No middle-man – You buy direct from the supplier at the best possible price. (2) Multiple purchase discounts if you purchase more than two unit. (3) Seasonal Sales - Great prices with additional discounts in various sales each year.

DESIGN : VAPORE has worked closely with European and Asian designers to create attractive contemporary designs to suit all tastes and needs. With a variety of sizes and features married together with the latest up-to-date trends, you can guarantee that a VAPORE product will add that much required finishing touch to your project.

Key points include:

(1) All glass designs available for the modern bathroom (2) Units that incorporate natural wood tones for the traditional bathroom (3) Practical solutions for families in everyday use environments.

FREE DELIVERY : All products within the VAPORE range including Steam Showers Cabin, Massage Tub, & Sauna Bath come complete with Free Delivery within the Chandigarh/ Punchkula / Mohali mainland. All products can be delivered within 72 hours.

Key points include:

(1) Prices include all delivery costs only for Chandigarh/ Punchkula/ Mohali. (2) Technician goes With delivery vehicles to unload consignment on your door step (Ground floor) & install the same day. (3) Strong wooden crates utilized to ensuring no damage is caused.

EXCLUSIVITY : VAPORE prides itself on unique design and material quality. You can only buy VAPORE products directly from ourselves as we do not use distributors or resellers based around the CHANDIRAH. VAPORE represents high quality at reasonable prices. By keeping products unique to VAPORE. we are able to manage the entire buying process to ensure that you receive the best possible service.

Key points include:

(1) Unique product range with unrivalled build quality (2) Guaranteed high level of customer service direct from VAPORE (3) Exclusive modern designs that you will only find at VAPORE.



A woman with long dark hair is relaxing in a white whirlpool tub. The water is bubbling and creating white foam. She has her eyes closed and a peaceful expression. The tub has several jets visible on the side. The background is a plain wall.

MASSAGE TUB

You need not to look anywhere than **VAPORE** for all your special bathtub needs! **VAPORE** whirlpools bring wellness into your home with great style & comfort.

After a day at work or at play, it always feels good to come home to soak in a hot bath. Wouldn't it be nice to feel the massaging jets and bubbles of a **whirlpool tub** on your shoulders and back? Our selection of **whirlpool bath tub** is here for the browsing. How about a **Jacuzzi shower steam**? Bet you can't remember the last time you had one of those! Feel the tension melt away when you take time to enjoy a soak in whirlpool tubs brought to you by **VAPORE**.

MASSAGE BATH TUB



MODEL : VB-ERC-A062
Size : 1700L x 800w x 580H

FUNCTION: 1. Top wooden frame under water fall 2. Handle Shower 3. Water Filler, Hot & Cold mixer with diverter 4. Designer Pillow 5. 1 pcs big Jets for foot massage 6. 2HP hydro pump 7. 8pcs air therapy ject with air blower 8. 3 middle hydrotherapy jets for back massage 9. Pop up with Overflow 11. Feather Touch panel, FM Radio, CD signal input, Big Speaker 12. 1pc Underwater chroma light. Safety Feature : Dry running protection, water lever sensor, ELCB



VB-HZL-203 Size : 1800L x 900w x 650H

FUNCTION: FINISH : WHITER COLOR

1. Acrylic bath Tub (Sanitary grade sheet),
 2. Front Toughened 8mm Glass & top wooden frame.
 3. Handle Shower 4. Water filler, Hot & Cold mixer with diverter 5. Designer back rest with Pillow
 6. 4 pcs big hydrotherapy Jets
 7. 2HP hydro massage pump
 8. 8pcs air therapy ject with Air blower pump
 9. 4 middle water jets for back massage
 10. Water fall & Oak bead 11. Pop up with Overflow
 12. 26 pcs LED lights 13. Ozonizer kit
 14. Touch panel, FM Radio, CD input, Speaker
 15. 1pc Underwater chroma light
- Safety Feature :** Dry running protection, water lever sensor, Earth leakage circuit breaker.
- Optional :** Side Panel, 1500w online Heater, Thermostatic faucet



VB-TRC-207 Size : 1800L x 1200w x 650H

FUNCTION: FINISH : WHITER COLOR

1. Acrylic bath Tub (Sanitary grade sheet),
 2. Front Toughened 8mm Glass & top wooden frame.
 3. Handle Shower 4. Water filler, Hot & Cold mixer with diverter 5. Designer back rest with Pillow
 6. 4 pcs big hydrotherapy Jets
 7. 2HP hydro massage pump
 8. 12pcs air therapy ject with Air blower pump
 9. 8 middle water jets for back massage
 10. Water fall & Oak bead 11. Pop up with Overflow
 12. 26 pcs LED lights 13. Ozonizer kit
 14. Touch panel, FM Radio, CD input, Speaker
 15. 1pc Underwater chroma light
- Safety Feature :** Dry running protection, water lever sensor, Earth leakage circuit breaker.
- Optional :** Side Panel, 1500w online Heater, Thermostatic faucet



VB-HZL-201 Size : 1800L x 1200w x 660H

FUNCTION: 1. Acrylic bath Tub (Sanitary grade sheet),
2. Front Toughened 8mm Glass & Top wooden frame.
3. Handle Shower 4. Water Filler, Hot & Cold mixer with diverter
5. Designer back rest with Pillow 6. 6 pcs big hydro massage Jets
7. 2HP hydro pump 8. 12pcs air therapy jest with air blower
9. 6 middle hydrotherapy jets for back massage
10. Waterfall & Oak bead 11. Pop up with Overflow 12. Ozonizer kit
13. Touch panel, FM Radio, CD signal input, Speaker 14. 1pc Underwater chroma light

Safety Feature : Dry running protection, water lever sensor, Earth leakage circuit breaker.

Optional : Side Panel, online Heater, Thermostatic faucet



VB-TRC-201 Size : 1800L x 1500w x 660H

FUNCTION: 1. Acrylic bath Tub (Sanitary grade sheet),
2. Front Toughened 8mm Glass & Top wooden frame.
3. Handle Shower 4. Water Filler, Hot & Cold mixer with diverter
5. Designer back rest with Pillow 6. 10 pcs big Jets for foot massage
7. 2HP hydro pump 8. 12pcs air therapy jest with air blower
9. 8 middle hydrotherapy jets for back massage
10. Water fall & Oak bead 11. Pop up with Overflow
12. Ozonizer kit 13. Touch panel, FM Radio, CD signal input, Speaker 14. 1pc Underwater chroma light

Safety Feature : Dry running protection, water lever sensor, Earth leakage circuit breaker.

Optional : Side Panel, online Heater, Thermostatic faucet



VB-HZL-202 Size : 1800L x 1200w x 650H

FUNCTION: 1. Acrylic bath Tub (Sanitary grade sheet),
2. Front & Back Toughened 8mm Glass & wooden frame.
3. Handle Shower 4. Water Filler, Hot & Cold mixer with diverter
5. Designer back rest with Pillow
6. 2 pcs big Jets for foot massage 7. 2HP hydro pump
8. 12pcs air therapy jest with air blower
9. 8 middle hydrotherapy jets for back massage
10. Water fall & Oak bead 11. Pop up with Overflow
12. Ozonizer kit 13. Touch panel, FM Radio, CD signal input, Speaker 14. 1pc Underwater chroma light

Safety Feature : Dry running protection, water lever sensor, Earth leakage circuit breaker.

Optional : Side Panel, online Heater, Thermostatic faucet



VB-TRC-211 Size : 1800L x 900w x 650H

FUNCTION: 1. Acrylic bath Tub (Sanitary grade sheet),
2. 2 side Top wooden frame. 3. Handle Shower
4. Water Filler, Hot & Cold mixer with diverter
5. Designer back rest with Pillow
6. 6pcs big Jets for foot massage 7. 2HP hydro pump
8. 8pcs air therapy jest with air blower
9. 6 middle hydrotherapy jets for back massage
10. Water fall & Oak bead 11. Pop up with Overflow
12. Ozonizer kit 13. Touch panel, FM Radio, CD signal input, Speaker 14. 1pc Underwater chroma light

Safety Feature : Dry running protection, water lever sensor, Earth leakage circuit breaker.

Optional : Side Panel, online Heater, Thermostatic faucet



VB-ERC-204 Size : 1450L x 800w x 680H

- FUNCTION:** 1. Acrylic compound material (Sanitary Grade)
 2. Water Fall 3. Handle Shower
 4. Water Filler, Hot & Cold mixer with diverter 5. Designer Pillow
 6. 5 pcs big hydro massage Jets 7. 2HP hydro pump
 8. 8 pcs air therapy & thigh massage jest with air blower
 9. 3 middle hydrotherapy jets for back massage
 10. Pop up with Overflow 11. Water Free Hose
 12. Motor with water removal function.
 13. Touch panel, FM Radio, CD signal input, Speaker
 14. 1pc Underwater chroma light 15. Front panel include
Safety Feature : Dry running protection, water lever sensor, Earth leakage circuit breaker.
Optional : online Heater, Thermostatic faucet



VB-ERC-205 Size : 1800L x 1350w x 680H

- FUNCTION:** 1. Acrylic compound material (Sanitary Grade)
 2. Water Fall 3. Handle Shower
 4. Water Filler, Hot & Cold mixer with diverter
 5. 2 pcs Designer Pillow 6. 6 pcs big hydro massage Jets
 7. 2HP hydro pump 8. 12 pcs air therapy & thigh massage jest with air blower
 9. 6 middle hydrotherapy jets for back massage
 10. Pop up with Overflow 11. Water Free Hose
 12. Commodity Shelf 13. Motor with water removal function.
 14. 2pcs Ss-304 handrail. 15. Ozonizer kit 16. Touch panel, FM Radio, CD signal input, Speaker
 17. 1pc LED chroma light
Safety Feature : Dry running protection, water lever sensor, Earth leakage circuit breaker.
Optional : Side Panel, online Heater, Thermostatic faucet



VB-NX-216 Size : 1800L x 1050w x 680H

- FUNCTION:** 1. Acrylic bath Tub (Sanitary grade sheet)
 2. Handle Shower 3. Water filler, Hot & Cold mixer with diverter
 4. 2pcs Designer Pillow
 5. 6 pcs big hydrotherapy Jets 6. 2HP hydro pump
 7. 12pcs air therapy jest 8. Air blower pump
 9. 4 micro water jets for back massage
 10. Pop up with Overflow
 11. Touch control panel, FM Radio, CD input, Speaker
 12. SS towel rail 13. Commodity shelf.
 14. 1pc Underwater chroma light
 15. Front panel of same material
Safety Feature : Dry running protection, water lever sensor, Earth leakage circuit breaker.
Optional : Side Panel, online Heater, Thermostatic faucet



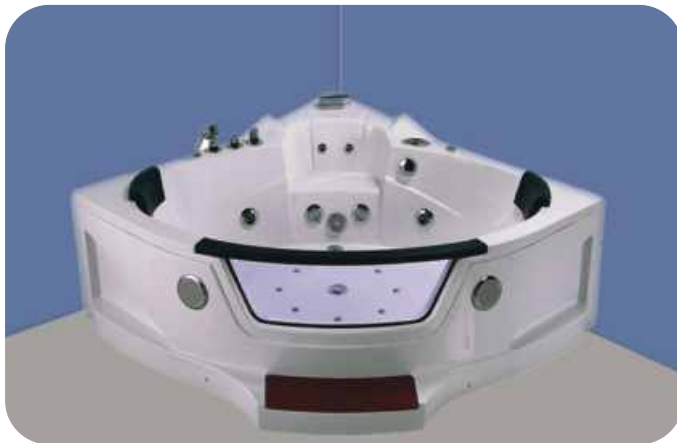
VB-NX-214 Size : 1800L x 1200w x 650H

- FUNCTION:** 1. Acrylic bath Tub with comfortable interior design (Sanitary grade sheet)
 2. Handle Shower 3. Water Filler, Hot & Cold mixer with diverter
 4. 2pcs Designer Pillow
 5. 6pcs big hydro Jets for thigh massage 6. 2HP hydro pump
 7. 12 pcs air therapy jest with air blower
 8. 8 spine massage jets for back & foot
 9. Pop up with Overflow
 10. Feather Touch panel, FM Radio, CD signal input, Speaker
 11. 1pc Underwater chroma light
 12. Front panel include of same material.
Safety Feature : Dry running protection, water lever sensor, Earth leakage circuit breaker.
Optional : Online Heater, Thermostatic faucet



MODEL : VB-ERC-MVO-11L
Size-1700 x 800 x 560

Front & Back 8mm Toughened glass, Air Switch on/off, Hand Shower, Water filler with Hot & Cold mixer & diverter, Designer Pillow, 4 big Hydro jets, 8 micro jets for back & foot massage. 2 Hp Hydro pump, 8 Air therapy jets with Blower. Front & Side panel include



VB-TRC-209 Size : 1570L x 1570w x 650H

1. Acrylic bath Tub (Sanitary grade sheet),
2. Front panel include 8mm Toughened Glass & top wooden frame with one foot step
3. Handle Shower
4. Water filler, Hot & Cold mixer with diverter
5. 2pcs Designer Pillow
6. 4pcs big hydrotherapy Jets
7. 2HP hydro massage pump
8. 8pcs air therapy jest with Air blower pump
9. 2pcs micro jets for back massage
10. Pop up with Overflow
11. Touch panel, FM Radio, CD input, 2 Speaker
12. 1pc Underwater chroma light

Safety Feature : Dry running protection, water lever sensor, Earth leakage circuit breaker.

Optional : 1500w online Heater, Thermostatic faucet



VB-NX-215 Size : 1800L x 1800w x 650H

All Size available : 6x3/6x4/6x4.6/6x5/6x6
(Features depends on size)

1. Acrylic bath Tub (4 seater)
2. Black Marble top
3. Handle Shower
4. 2pcs Designer Pillow
5. Water filler, Hot & Cold mixer with diverter
6. 8 pcs big hydrotherapy Jets
7. 2HP hydro pump
8. 16pcs air therapy jest
9. Air blower pump
10. 12 Spine massage jets for 4 person
11. Pop up with Overflow
12. Touch control panel, FM Radio, CD input, Speaker
13. SS towel rail
14. Commodity shelf.
15. 1pc Underwater chroma light
16. SS stand
17. Front & Side panel

Safety Feature : Dry running protection, water lever sensor, Earth leakage circuit breaker.

Optional : 1500w online Heater, Thermostatic faucet

WHIRLPOOL

PLAIN TUB



WHIRLPOOL SYSTEM

MATERIAL : 3.8mm High Quality Acrylic Sanitary grade Sheet With 4mm Fiber Glass & 9mm board in the base.

FEATURES :-TUB+FRONT PANEL+STAND

- (1) Head Rest
- (2) 6-Hydrotherapy Jets
- (3) 3/6 micro Jets for back massage
- (4) 2/4 micro Jets for foot massage
- (5) Hand Shower, Single lever Hot & Cold Mixer, Diverter & Water filler
- (6) 1.5 HP Pump for hydro massage system
- (7) Under Water Light with Chromo therapy
- (8) Towel Rod with Front panel
- (9) Pop up waste with overflow

OPTION: (1) Side Panel (2) On line Heater (3) 8 Air Therapy Jets with Blower (4) Marble top on Bath Tub (Selected Model) (5) Electronic control panel for massage system (FM/CD input, Ozoinzer o3, Time & temp. setting, Speaker, Volume up/down)

Safety Feature : Water level Sensor, Dry running Protection.



WHIRLPOOL PLAIN TUB

Vapore[®]
bathing to stay healthy

VB- PSH-020, SIZE : 5.3 x 3 x 2.6"



JACUZZI SYSTEM (MESSAGE TUB)

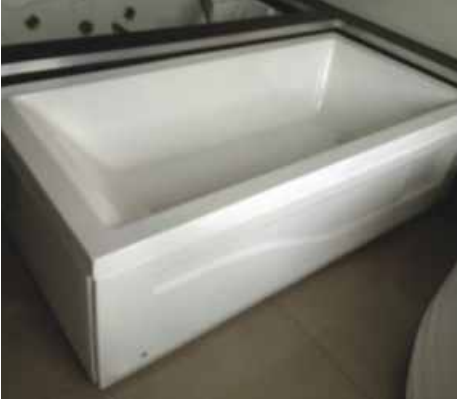
MATERIAL : 3.8mm High Quality Acrylic Sanitary grade Sheet With 4mm Fiber Glass & 9mm board in the base.

FEATURES :-TUB+FRONT PANEL+STAND

- (1) Head Rest
- (2) 6-Hydrotherapy Jets
- (3) 3/6 micro Jets for back massage
- (4) 2/4 micro Jets for foot massage
- (5) 12 pcs Air therapy Jets with Blower
- (6) Hand Shower, Single lever Hot & Cold Mixer, Diverter & Water filler
- (7) 1.5 HP Pump for hydro massage system
- (8) Under Water Light with Chromo therapy
- (9) Towel Rod in front panel
- (10) Pop up waste with overflow
- (11) Electronic control panel for massage system (FM/CD input, Ozoinzer o3, Time & temp. setting, Speaker, Volume up/down)

Safety Feature : Water level Sensor, Dry running Protection.

OPTION: (1) Side Panel (2) On line Heater (3) Air therapy Jets with under water lights (4) Marble top (Selected Model)



VB-LENC 001- 5 x 3"



VB-VALI 002- 5.6 x 2.6"



VB-REG 003- 6 x 3"



VB-STAN 004- 5.6 x 2.6"



VB-REG 005- 5.6 x 2.6"



VB-CRA 006- 6 x 2.6"



VB-ELAN 007- 6 x 3"



VB-UTI 008- 6 x 3"



VB-SEA 009- 6x4/6x4.6/6x5



VB-VIVO-010- 4 x 4"



VB-TUR-011- 4.6x4.6"



VB-QUEEN-012- 5x5"



VB-OVAL-5.7x2.6



VB-ERC-MV006P-1750x730x770



VB-KID-015



VB-POND-017- 5 x 5"



VB-CLA-018- 5x5"

VB-YED 212- 1700 x 1000 x 2150



Air Switch on/off, Hand Shower, Overhead shower, Water filler with Hot & Cold mixer & diverter, Designer Pillow, 6 big Hydro jets, 5 micro jets for back & foot massage. 2 Hp Hydro pump, 8 Air therapy jets with Blower. Front & Side panel include, Shower Enclosure on tub (on fix & one door).

VB-LARA-016- 5.3x2.6

Accessories

STEAM BATH-SAUBA BATH-MASSAGE TUB



Hydrotherapy Pump



Air Blower Pump



Hydro Targeted Jet



Air Jet's Distributor



LED Under water chromo Light



Online Heater to constant temp



Pre. Regulator & on/off Switch



Suction & Air Therapy Jets



LED Hydro Therapy Jet



Spine / Mirco Jets for Back



Electric Control Panel Kit



Spoon & Bucket or Sauna bath



Pop-up+overflow Chain Plug+OF



Sauna bath Heater



Humidity & Temp. Meter

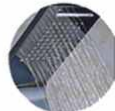
SHOWER PANEL





VM-2018

1. Material : 0.8mm Stainless steel anti-finger finish
 2. Size : 1400*200*70(mm)
 3. Top Shower : 5*10 grey nipples with waterfall
 4. Jets : 2pc, ABS massage jets
 5. ABS Spout with chrome finish
 6. Hand Shower : ABS with ABS holder on the side
 7. Diverter & mixer : Normal mixer made of brass
 8. Handles : Zinc, chrome finish 2pcs
 9. Flexible hose : 1.5m s/s double locked
- OPTION FEATURE : LED Lights



Rainfall Shower



Waterfall shower



Hand Shower



Body Jets



Spray jets



Spout water



VM-2041

1. MATERIAL : 0.8mm Stainless steel anti-finger finish
2. Size: 1400*200*70(mm)
3. Top Shower : 5*10 grey nipples with waterfal
4. JETS : 5pcs, ABS jets with chrome finish ,4 adjustable jets
5. ABS spout with chrome finish
6. Hand Shower : ABS with ABS holder on the side
7. Diverter & mixer : Normal mixer made of brass
8. Handle : Zinc brush finish 2pcs
9. Flexible hose : 1.5m S/S double locked

VM-1311



1. Material : 0.8mm Stainless steel anti-finger finish
2. Size : 1400*200*70(mm)
3. Top shower : 5*10 grey nipples
4. Jets : 2pcs, ABS
5. ABS spout with chrome finish
6. Hand shower : ABS with ABS holder on the side
7. Diverter & mixer : NORMAL, brass faucet
8. Handles : Zinc brush finish 2pcs
9. Flexible hose : 1.5m s/s double locked



1. Material : 0.8mm Stainless steel anti-finger finish
2. Size : 1400*200*70(mm)
3. Top shower : 5*10 grey nipples and ABS waterfall
4. Jets : 2pcs, ABS
5. ABS spout with chrome finish
6. Hand shower : ABS with ABS holder on the side
7. Diverter & mixer : NORMAL, brass faucet
8. Handles : Zinc brush finish 2pcs
9. Flexible hose : 1.5m s/s double locked

VM-1318

VM-1921



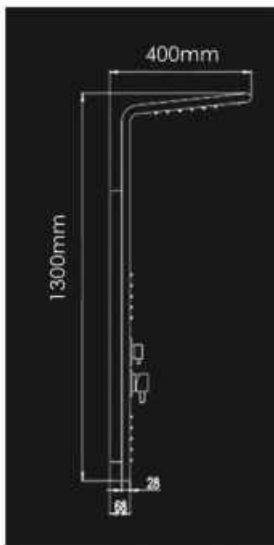
1. Material : 1.0mm 304 SS anti-finger finish
2. Size : 1400*200*70(mm)
3. Top shower : 5*10 grey nipples and ABS waterfall
4. Jets : 5*10 grey nipples and ABS waterfall
5. Hand shower : ABS with ABS holder on the side
7. Diverter & mixer : Normal mixer made of brass
8. Handles : Zinc, Chrome finish 2pcs
9. Flexible hose : 1.5m s/s double locked



1. Material : 1.0mm 304 SS anti-finger finish
2. Size : 1400*200*70(mm)
3. Top shower : Shower head + brass shower arm
4. Jets : 4pcs ABS massage jets
5. Hand shower : ABS with ABS holder on the side
6. Diverter & mixer : Normal mixer made of brass
7. Handle : Zinc, Chrome finish 2pcs
8. Flexible hose : 1.5m s/s double locked

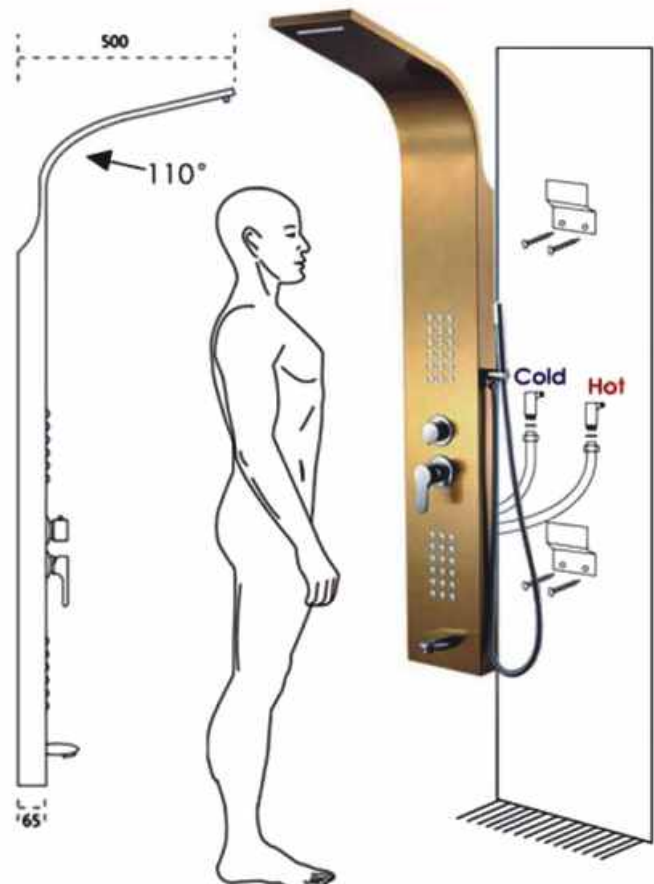


VM-1318



VM-1320 (New Model)

1. Material : 1.0mm 304 SS anti-finger finish
2. Size : 1300*400*68(mm)
3. Top Shower : Shower head + Brass Shower arm
4. Jets : 2pcs big ABS massage jets
5. Hand shower & Spout : ABS with ABS holder on the side
6. Diverter & mixer : Normal mixer made of brass
7. Handle : Zinc, Chrome finish 2pcs
8. Flexible hose : 1.5m s/s double locked



Installation Guide Line



STEAM BATH

This is the model : VB-TRC-143 (220V) it can turn your existing shower into a Steam Room. Easy installation, Auto Water Fill, Auto Flush, Maintenance Free, No need to build expensive Drain, The exhaust water will automatically flow out to the Steam Exhaust.

INCLUDED: Steam generator in a separate box and Steam Panel, and all flexible connection wires and hoses (up to 3 feet).

- Speaker , Radio, Audio Hook up, telephone, Water Jets interchanging controlled by computer.
- We do also include all wires, Water, and Steam Hoses.
- With our system, you don't need to hire a plumber to build a new expensive drain. The system will automatically feed the water into the steam generator and will automatically flush the remaining water after each use into the exhaust steam exit, so you will not inhale the bacteria create inside the steam generator.
- Each new steam bath will be used new water.
- With easy installation. It takes about 45 minutes for customers to install it by themselves. We build our system strong enough for a standard shower size. Any bigger steam generator will only consume more electricity, and will take more space.
- You will have a 2 full years warranty from us, and we stand behind our products.
- You will expect to use our products for the next 10 years without any problem.



STEAM SHOWER PANEL



VB-143-Size : 1630 x 260 x 118 mm

- 8mm tempered Glass front (White/Black), SS back.
- Built-in or wall-mounted and position able as desired in the Shower area
- New Steam panel, a smart choice for your Dream SPA
- Feather touch panel, for Time, Temperature & Music
- New Compact design & Easily installation.
- 3 kw--6kw Steam Generator
- Brass faucet, Brass handle Shower, Brass spout
- Stainless Steel Steam outlet with 6 hole
- Stainless steel Top Shower
- Function: Blue tooth, Phone, LED Panel light, button light, Handle Shower, Top Shower.



Model : VB-141- Size : 1580 x 260 x 118 mm

- Material: 8mm tempered Glass White or Black Color
- Built-in or wall-mounted as desired in the Shower area
- Feather touch panel, for Time, Temperature & Music
- 3 kw--6kw Steam Generator
- SS Steam outlet with 6 hole with PVC Back board
- Function: Blue tooth, Phone, LED Panel light, button light.

VB-142- Size : 1530 x 260 x 118 mm

- Material: Stainless Steel Column
- Built-in or wall-mounted and position able as desired in the Shower area
- Feather touch panel, for Time, Temperature & Music
- New Compact design & Easily installation.
- 3 kw Steam Generator
- Brass faucet, Brass handle Shower, Brass spout
- Stainless Steel Steam outlet & Top Rain type shower
- Function: Blue tooth, Phone, LED Panel light, button light, Handle Shower, Top Shower.





Certification : ISO 9001:2015

**2yrs
Guarantee**

STEAM GENERATOR

DESCRIPTION:

Model No: VB-UK-GS082

Steam box size: 430x385x200mm / Computer panel size: 174x120x72mm

Available in 4.5KW, 6KW, 9KW, 12KW, 18KW

Working and programs:

(A) Steam time and temperature setting : Time setting range from 1 to 99 minutes (default 45minutes), temperature setting range 25 to 60 degree (default 45 degree).

(B) The steamer boiler tank will be drain after 3 minutes after system is off.

(C) Steam boiler tank is made from stainless steel and insulation and fireproofing material around tank. The outside cover is made from rust proof iron sheet.

(D) The tank has over heat protection. If happen to danger, the system will be shut down automatically.

(E) If there is no water in tank or water supply is cut off then it will be shut down immediately.

PARAMETER:

Power output : 10.5-12KW / Power Supply : 380V

Duration : 1500V / Ceiling lamp : 36V/40W / Working space : 12-15CBM.

**WATER PROOF CONTROL PANEL YOU CAN
INSTALL IT IN STEAM CABIN.**



Where you can Install your Steam Box



Model :
VB-IND-IN 002





You need not to look anywhere than **VAPORE** for all your special bathtub needs! **VAPORE** whirlpools bring wellness into your home with great style & comfort.

After a day at work or at play, it always feels good to come home to soak in a hot bath. Wouldn't it be nice to feel the massaging jets and bubbles of a **whirlpool tub** on your shoulders and back? Our selection of **whirlpool bath tub** is here for the browsing. How about a **Jacuzzi shower steam**? Bet you can't remember the last time you had one of those! Feel the tension melt away when you take time to enjoy a soak in whirlpool tubs brought to you by **VAPORE**.

STEAM+SHOWER CABIN

5yrs
Guarantee*



VB110-Laura-900x1200x2150



Vb111Lara-1000x1000

MOSTLY COMMON FEATURES:

1. Steam generator with time and temperature settings;
2. Computer control panel and remote control; 3. Electricity leakage protection device; 4. FM radio and loudspeaker;
5. Elegantly designed ceiling light; 6. Circulation fan, music & phone connection; 7. Ozone generator and aroma therapy;
8. Foot massage combined with Foot rollers and hydro massage jets; 9. Monsoon top shower and hand held shower;
10. Molded seat and built-in storage shelf; 11. Pre-fitted with thermostatic valve & 12 adjustable jets; 12. 4-switch chrome diverter-top shower, hand shower, body jet or foot massage.

MATERIAL SPECIFICATION:

- (1) Fiberglass reinforced ABS tray complete with drainer;
- (2) Metal or stainless steel frame support under the tray;
- (3) Waterproof strip around glass to prevent water leakage;

- (4) Magnetic seal system to create a close fitting door;
- (5) Satin finish strengthened aluminum alloy profile;
- (6) 5mm thickness tempered safety clear glass.

ELECTRICAL STANDARD:

El. Voltage : 110/220V, Frequency: 50/60Hz, Steam : 3000W

OVERHEAT PROTECTION: the steam generator will be shut down automatically if the temperature of the box gets too hot.

NO WATER PROTECTION: if there is no water in steam generator, it will shut down immediately.

BATHROOM PLUMBING:

- (1) Hot and cold water supply required.
- (2) Balanced water pressure of 2-3 bar required.
- (3) Gravity fed system may require a pump to meet pressure requirement.



Vb116-Lara-900X900X2150



Vb115-Lara-900X900X2150



VB-117-ERC-1200x800x2130



VB-118-ERC 900x900x2150



VB-120 YED-1700x900x2180



VB-121 TRC-GT0513B-3.3x3.3



VB-119-TRC-1400x900x2100



VB-122-TRC-GT0515-3x3x7.3



STEAM SHOWER JACUZZI TUB



VB004-A Laura 1500x1500x2100

Steam showers have surged in popularity as a part of new home construction and bathroom renovations. With new developments in plumbing technology and equipment, they are easy to install in almost any bathroom and have become an affordable private retreat. Steam showers have the ability to unclog pores and remove deeply trapped congestion from under the surface of the skin. A steam shower can be taken daily and is a great way to have a steam treatment without the inconvenience and cost of going to the gym or spa.

Steam showers from **VAPORE** act as a Spa Center by providing several hydro therapies. It looks like regular shower Panel, but steam shower enclosures have sealing doors. All you have to do to take a steam shower is enter the cabin, and at the press of a button, the steam will start producing within a few minute. Relax on the bench seat and enjoy your bath.

FEATURES: 1. Steam generator with time and temperature settings; 2. Whirlpool bath, air bubble and steam shower combo; 3. Computer control panel and remote control; 4. Electricity leakage protection device; 5. FM radio and loudspeaker; 6. Elegantly designed ceiling light; 7. Circulation fan, music & phone connection; 8. Ozone generator and aroma therapy; 9. Monsoon top shower and hand held shower on a sliding bar; 10. Molded seat and useful glass storage shelf; 11. Pre-fitted with a thermostatic shower valve and 2x3 adjustable jets; 12. 4-switch chrome diverter-whirlpool bath inlet, top shower, hand shower or bodyjet.

MATERIAL SPECIFICATION:

1. Fiberglass reinforced ABS tray complete with drainer;

2. Metal or stainless steel frame support under the tray;
3. Waterproof strip around glass to prevent water leakage;
4. Magnetic seal system to create a close fitting door;
5. Satin finish strengthened aluminum alloy profile;
6. 5mm thickness tempered safety blue glass.

ELECTRICAL STANDARD:

Electric voltage: 110/220V, Frequency: 50/60Hz,
Steam generator: 3000W, Whirlpool pump: 1HP.

OVERHEAT PROTECTION: the steam generator will be shut down automatically if the temperature of the box gets too hot.

NO WATER PROTECTION: if there is no water in steam generator, it will shut down immediately.



VB005-TRC-1550x1550x2100



VB002-Laura-1650x920x2100



VB003-Laura-1500x1500x2100



VB006-1500x1500x2100

SAUNA BATH



Integrated with advanced equipments, Sauna Heater is used for dry or wet saunas. With stainless steel body and galvanized steel rock tray, this heater can be installed in flat or a corner on a wall. Vented body design of the heaters helps in swift warm-up and the heavy duty electric elements have longer life.

FEATURES:

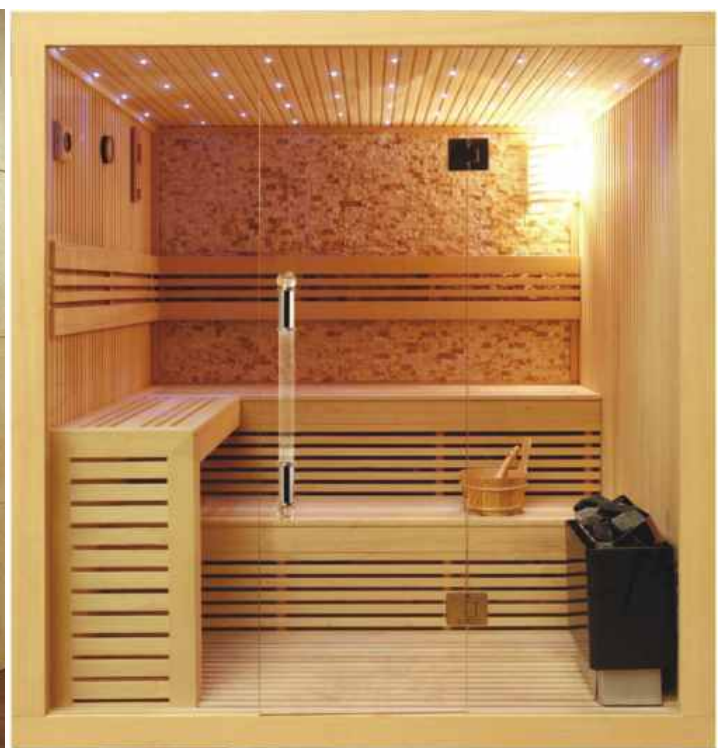
- ⦿ Sauna heater can be used for wet or dry bath
- ⦿ Water can be poured on to the rocks.
- ⦿ Has galvanized steel rock tray & S.S body
- ⦿ Heavy-duty electric elements have long life
- ⦿ Fast warm-up due to vented body design
- ⦿ Can be installed in a corner or flat on a wall

Sauna Accessories



10 Benefits Of Sauna

1. Saunas relieve stress.
2. Saunas relax muscles and soothe aches/pains in both muscles and joints.
3. Saunas flush toxins.
4. Sauna cleanses the skin.
5. Saunas can induce a deeper sleep.
6. Saunas bring about recreational and social benefits.
7. Saunas improve cardiovascular performance.
8. Saunas burn calories.
9. Saunas can help fight illness.
10. Saunas just feel good.





VB-LARA 044-1700x1100x2200



5. Can have a bath after the Sauna immediately?

----Should not take a shower after the 1-2 hours minimum of Sauna.

MATTERS NEED ATTENTION

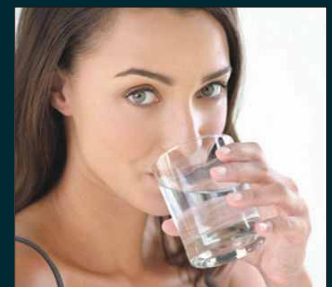


1. What circumstance can't use sauna?

----After dinner, drinking is not suitable for have a sauna immediately.

2. What need to pay attention before using?

----Please drink more water, To compensate for the loss of sweat. Please don't overeating, to avoid stomach discomfort.



3. How long for the each sauna is the best?

----Each time is 45-60 min. is the best, but is also can make appropriate adjustment according personal tolerance.

4. What need to pay attainting after the Sauna?

----Should not smoking in 2 hours after the sauna or eat the cold food.





A "whirlpool", the way the word is commonly used, refers to any spa or hot tub's circular "water action". Remember, a "Jacuzzi" is not a generic name for spas. Jacuzzi is a company that makes "whirlpool baths" and spas. Any spa or hot tub will provide you with this "whirlpool action" of the water.

A hot tub is a large tub or small pool full of heated water used for hydrotherapy, relaxation or pleasure. Some have powerful jets for massage purposes. Hot tubs are sometimes also known as SPAS.

In contrast to a typical bathtub, a hot tub is designed to be used by more than one person at a time, with many models accommodating four people. Hot tubs are usually located outdoors, although they can be installed indoors.

Also, the water in a hot tub is not changed with each use, but is kept sanitary using methods similar to those used for Swimming pool. Another difference between baths and hot tubs is that soaps and shampoos are not used in wet-jetted hot tubs (although they can be used in air-jetted hot tubs).

OUT DOOR SPA



VBA-098ERC
3800x2240x940

VBA-085ERC
1850x1280x750

Seats : 1
Lounge : 2pc
Total Jets : 33



VBA-092ERC
2100x1580x780

Seats : 1
Lounge : 2pc
Total Jets : 42



VBA-082ERC
1910 x1910x820

Seats : 7
Lounge : 1pc
Total Jets : 38



VBA-081ERC
1910 x1910x820

Seats : 7
Lounge : 1pc
Total Jets : 24



**OUT DOOR
SPA TUB**



**VBA-096ERC
2280X2280X940**

**Seats : 4
Lounge : 2pc
Total Jets : 80**



**VBA-086ERC
2280X2280X940**

**Seats : 4
Lounge : 2pc
Total Jets : 82**



India's 1st SERVICE CENTER



Have you any problem in your
JACUZZI-STEAM & SAUNA

No need to bother, we are in your city
JUST CALL US : **07307207566**

Vapore™

bathing to stay healthy



Certification : ISO 9001:2015



Complete interior & Exterior Solution



Manufacturing at : Rajkot (Gujrat)
Display : Plot No.1, Sai City, Derabasi, Punjab
Corp. off : SCO-303, FF, Sector-38D, Chandigarh



+91-7307207566 / +91-08289007566



info.wellness@vapore.co.in
customercare@vapore.co.in,



www.vapore.co.in



India's 1st " SERVICE CENTER "
Jacuzzi bath tub/Steam Gen./Sauna bath

Visit us to **SERVE** you better for your **DREAM HOME**